



**India Meteorological Department  
(Ministry of Earth Sciences)**

**NATIONAL BULLETIN NO. 18 (BOB/05/2024)**

**TIME OF ISSUE: 0830 HOURS IST**

**DATED: 17.10.2024**

**FROM: INDIA METEOROLOGICAL DEPARTMENT**

**(FAX NO. 24643965/24699216/24623220)**

**TO: CONTROL ROOM, NDM, MINISTRY OF HOME AFFAIRS (FAX.NO. 23093750)**

**CONTROL ROOM NDMA (FAX.NO. 26701729)**

**CABINET SECRETARIAT (FAX.NO.23012284, 23018638)**

**PS TO HON'BLE MINISTER FOR S & T AND EARTH SCIENCES (FAX NO.23316745)**

**SECRETARY, MOES (FAX NO. 24629777)**

**H.Q. (INTEGRATED DEFENCE STAFF AND CDS) (FAX NO. 23005137/23005147)**

**DIRECTOR GENERAL, DOORDARSHAN (23385843)**

**DIRECTOR GENERAL, AIR (23421105, 23421219)**

**PIB MOES (FAX NO. 23389042)**

**UNI (FAX NO. 23355841)**

**D.G. NATIONAL DISASTER RESPONSE FORCE (NDRF) (FAX NO. 26105912, 2436 3260)**

**DIRECTOR, PUNCTUALITY, INDIAN RAILWAYS (FAX NO. 23388503)**

**CHIEF SECRETARY, MAHARASHTRA (FAX NO. 022- 22028594)**

**CHIEF SECRETARY, GUJARAT (FAX NO. 079-23250305)**

**CHIEF SECRETARY, DAMAN & DIU (FAX NO. 0260-2230775)**

**CHIEF SECRETARY, DADRA & NAGAR HAVELI (FAX NO. 0260-2645466)**

**CHIEF SECRETARY, GOA (FAX NO. 0832-2415201)**

**CHIEF SECRETARY, KARNATAKA (FAX NO. 080-22258913)**

**CHIEF SECRETARY, KERALA (FAX NO. 0471-2327176)**

**CHIEF SECRETARY, LAKSHADWEEP (FAX NO. 04896-268124)**

**CHIEF SECRETARY, TAMIL NADU (FAX NO. 044-25672304)**

**CHIEF SECRETARY, ANDHRA PRADESH (FAX NO. 0863-2441029)**

**CHIEF SECRETARY, PUDUCHERRY (FAX NO. 0413-2334145)**

**Subject : Depression crossed north Tamil Nadu and South Coastal Andhra Pradesh coasts close to north of Chennai\***

The depression over westcentral and adjoining southwest Bay of Bengal moved west-northwestwards with a speed of 14 kmph during past 6 hours and crossed north Tamil Nadu - South Andhra Pradesh coasts between Puducherry and Nellore, close to north of Chennai, near latitude 13.5 N and longitude 80.2 E around 0430 hrs IST of today, the 17th October. Subsequently, it weakened into a well marked low pressure area and lay over South coastal Andhra Pradesh and adjoining North coastal Tamil Nadu at 0530 hrs IST of today, the 17th October, 2024.

It is likely to continue to move west-northwestwards and weaken further into a low pressure area during next 12 hours.

**Warnings:**

**(i) Rainfall Warning:**

**Tamil Nadu & Puducherry:** Isolated heavy rainfall likely over north interior Tamil Nadu on 17<sup>th</sup> October.

**South Coastal Andhra Pradesh & Rayalaseema:** Heavy rainfall at isolated places is likely on 17<sup>th</sup> October.

**South Interior Karnataka:** Heavy rainfall at isolated places is likely on 17<sup>th</sup> October.

**Kerala:** Light to moderate rainfall at most places with isolated heavy rainfall is likely over Kerala on 17<sup>th</sup> October.

**(ii) Wind Warning:**

Squally weather with wind speed reaching 25-35 kmph gusting to 45 kmph is likely to prevail over westcentral Bay of Bengal and along & off Tamil Nadu, Puducherry and south Andhra Pradesh coasts during next 06 hours.

**(iii) Sea Condition:**

Moderate to Rough Sea condition is likely to prevail over westcentral Bay of Bengal and along & off Tamil Nadu, Puducherry and south Andhra Pradesh coasts during next 06 hours.

**(iv) Fishermen Warning:**

Fishermen are advised not to venture into westcentral and adjoining Southwest Bay of Bengal till noon of 17<sup>th</sup> October.

**(v) Flash Flood Guidance:**

**24 hours Outlook for the Flash Flood Risk (FFR) till 0530 IST of 18-10-2024 :**

Low to Moderate flash flood risk likely over few watersheds & neighbourhoods of following Met Sub-division during next 24 hours.

**Rayalaseema** - Chittoor and Kadapa districts.

**SI Karnataka** - Chitradurga and Davangere districts.

Surface runoff/ Inundation may occur at some fully saturated soils & low-lying areas over AoC as shown in map due to expected rainfall occurrence in next 24 hours.

❖ **Impact Expected [Tamil Nadu (including Chennai) and Andhra Pradesh due to heavy rainfall]**

- Localized Flooding of roads, water logging in low lying areas and closure of underpasses mainly in urban areas of the above region.
- Occasional reduction in visibility due to heavy rainfall.
- Disruption of traffic in major cities and roadways due to water logging in roads leading to increased travel time and incidents
- Likely disruption of marine and inland water transportation like small boats and trawlers.
- Minor damage to kutch roads.
- Possibilities of damage to vulnerable structure.
- Damage to horticulture and standing crops in some areas due to inundation and wind.
- Riverine flooding in some river catchments (please visit Webpage of Central Water Commission)

❖ **Action Suggested [Tamil Nadu and Andhra Pradesh due to heavy rainfall]**

- Fishermen are advised not to venture into westcentral and adjoining southwest Bay of Bengal till noon of 17<sup>th</sup> October.
- Check for traffic congestion on your route before leaving for your destination.
- Follow any traffic advisories that are issued and avoid going to areas that face the water logging problems often.
- Avoid staying in vulnerable structure.

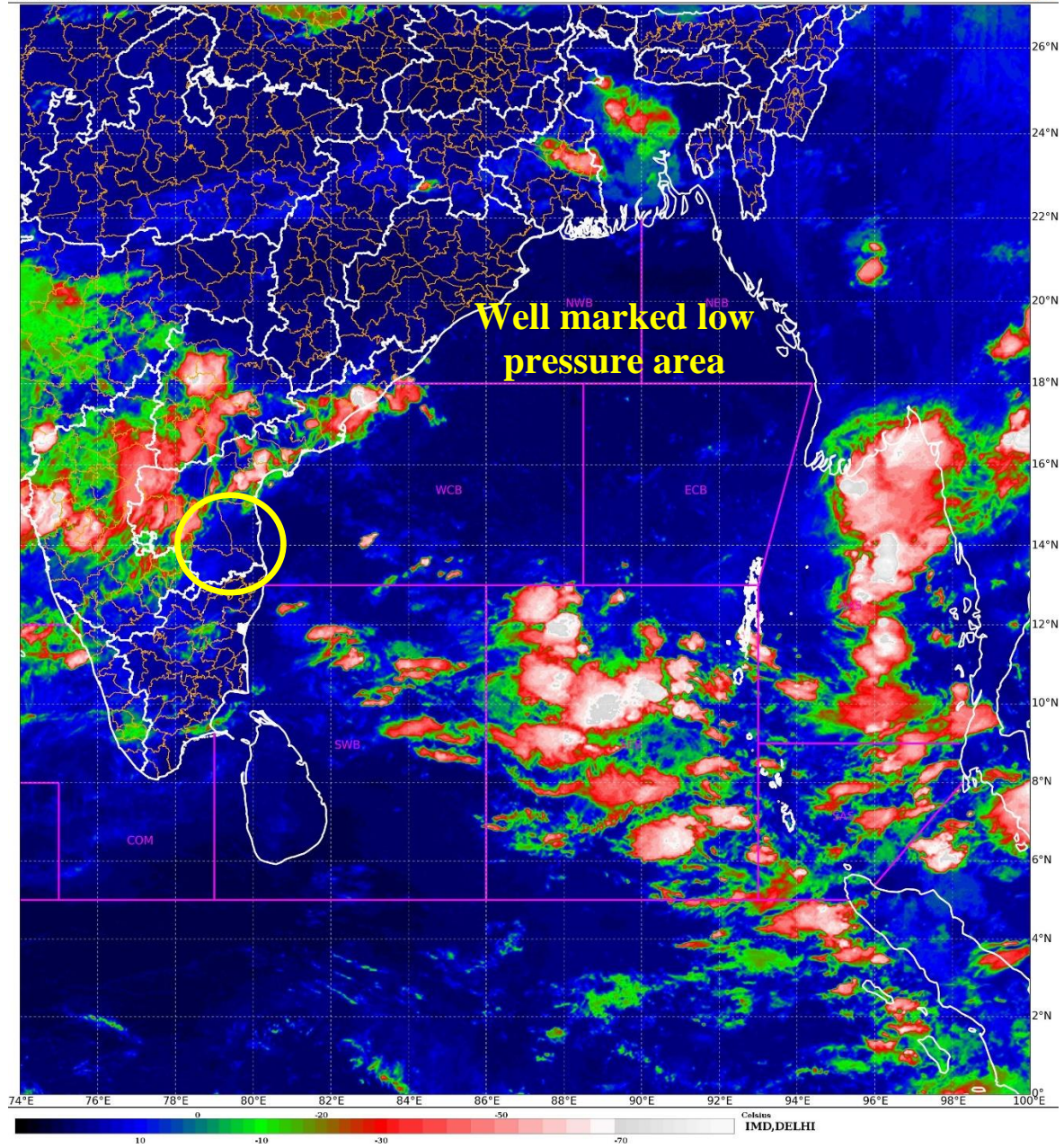
**Agromet advisories for Heavy Rainfall**

- Provide mechanical support to horticultural crops & staking to vegetables.
- Keep the harvested produce at safer place.

*This is last update in association with this system. However, regular weather bulletins will continue from National Weather Forecasting Centre and respective Regional Meteorological Centres and Meteorological Centres in association with the Well Marked Low Pressure Area over south coastal Andhra Pradesh and adjoining north coastal Tamil Nadu.*

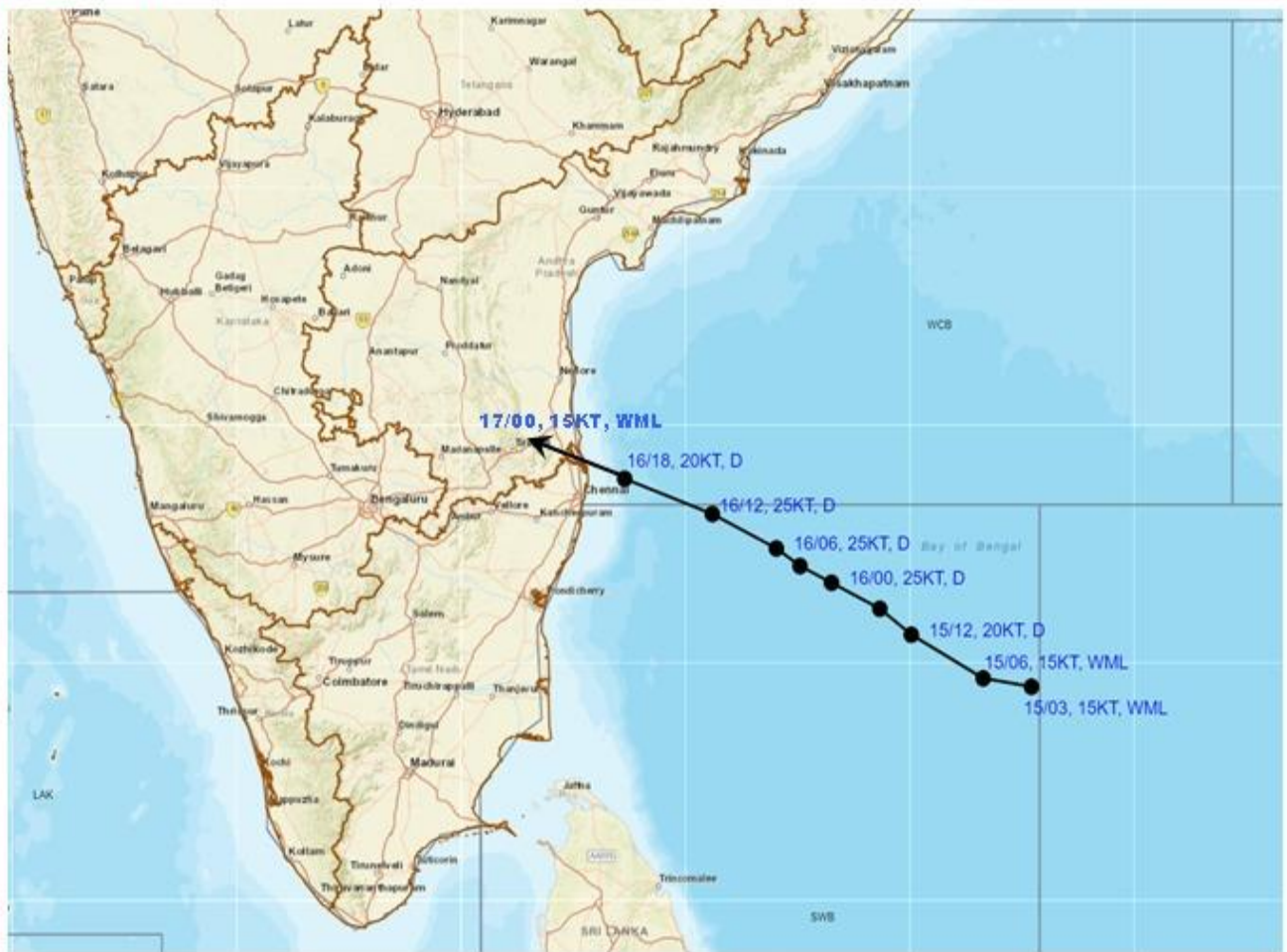
**(Dr. D. R. Pattanaik)**  
**Scientist-F, RSMC & IMD, New Delhi**

*Copy to: ACWC Kolkata/ACWC Mumbai/ACWC Chennai/CWC Ahmedabad/CWC Bhubaneswar/CWC Vishakhapatnam CWC, Thiruvananthapuram/ MC, Goa*





## OBSERVED TRACK OF DEPRESSION OVER BAY OF BENGAL DURING 15<sup>TH</sup> TO 17<sup>TH</sup> OCTOBER, 2024



DATE/TIME IN UTC

IST=UTC + 0530

L: LOW PRESSURE AREA

WML: WELL MARKED LOW PRESSURE AREA

D: DEPRESSION (17-27 KT)

DD: DEEP DEPRESSION (28-33 KT)

CS: CYCLONIC STORM (34-47 KT)

SCS: SEVERE CYCLONIC STORM (48-63KT)

VSCS: VERY SEVERE CYCLONIC STORM (64-89 KT)

ESCS: EXTREMELY SEVERE CYCLONIC STORM (90-119 KT)

SuCS: SUPER CYCLONIC STORM (≥ 120 KT)

● LESS THAN 34 KT

○ 34-47 KT

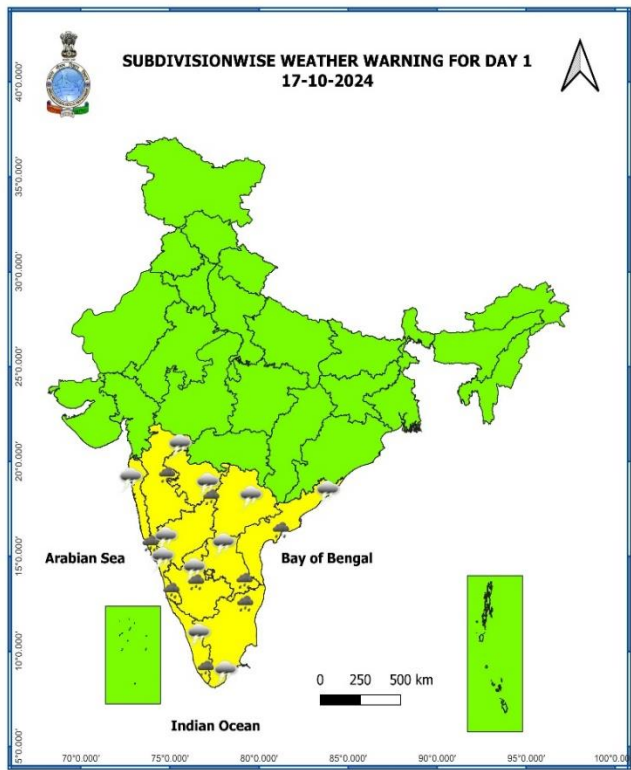
○ ≥ 48 KT

— OBSERVED TRACK

— FORECAST TRACK

▲ CONE OF UNCERTAINTY

KT: Nautical miles per hour



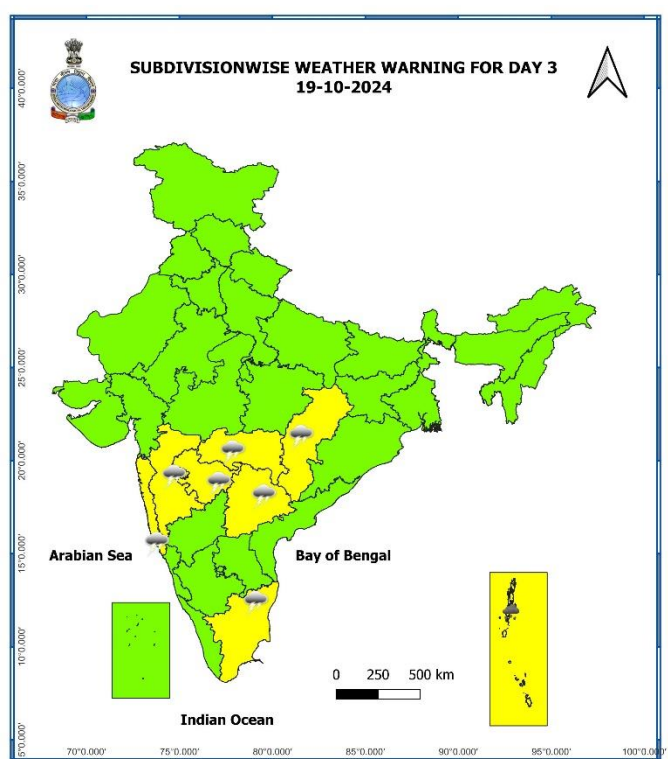
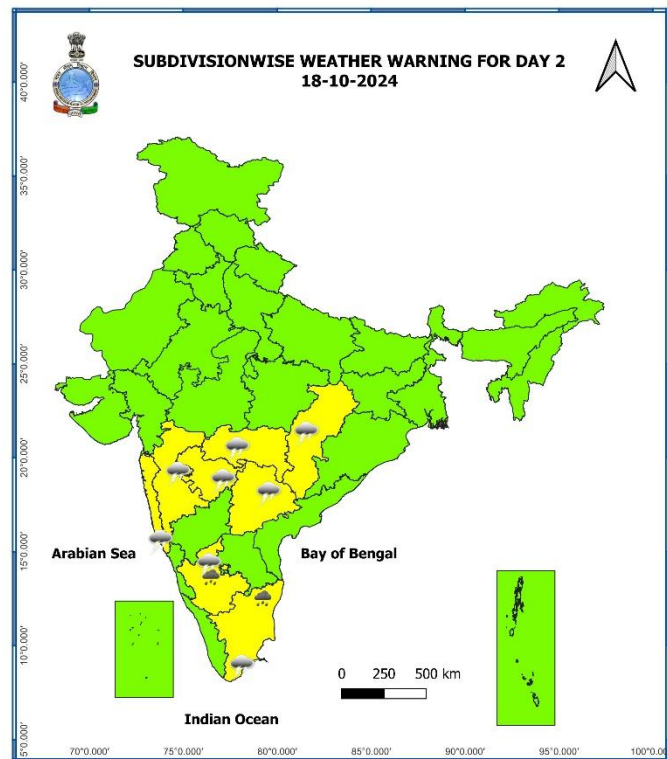
- Fog
- Heavy Rain
- Very Heavy Rain
- Extremely Heavy Rain
- Thunder & Lightning
- Hailstorm
- Dust Raising Winds
- Heavy Snow
- Dust Storm
- Heat Wave
- Warm Night
- Hot Day
- Hot & Humid
- Strong Surface Winds
- Cold Wave
- Cold Day
- Ground Frost

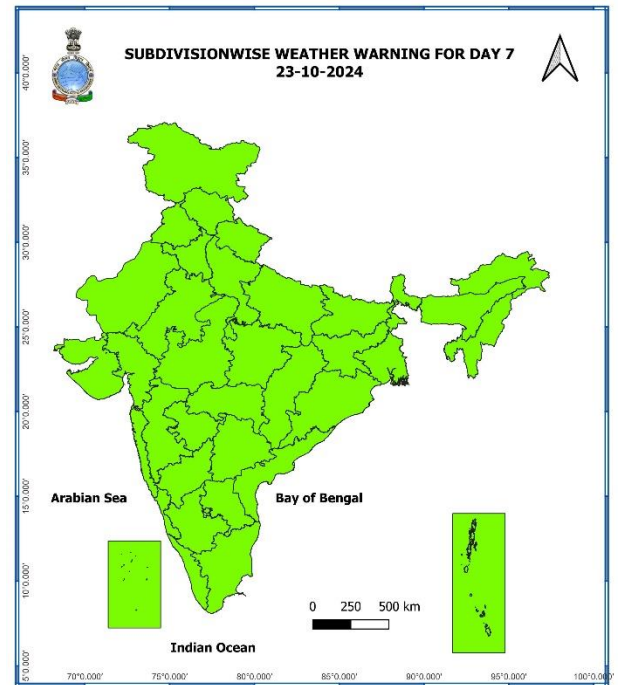
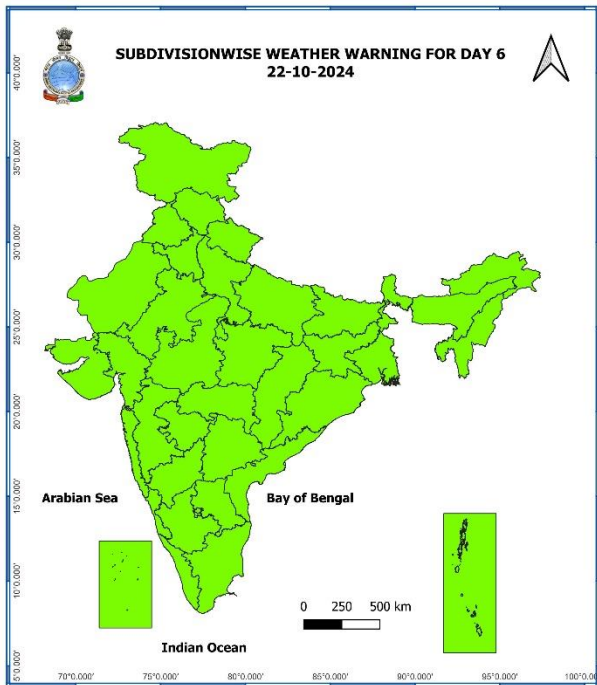
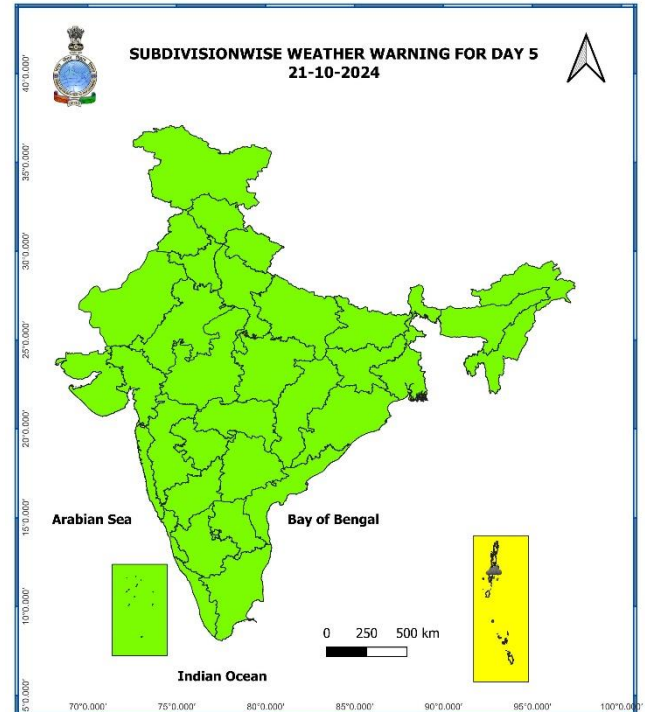
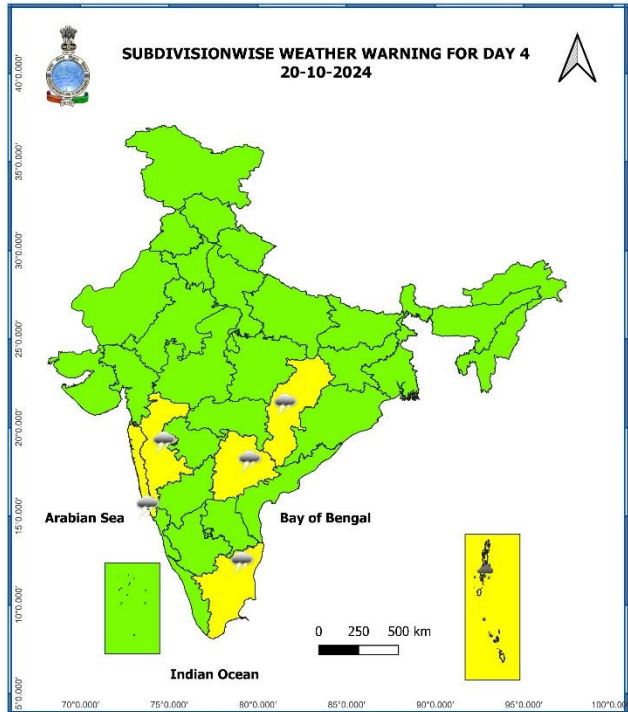
**COLOUR CODED WARNING**

- No Warning (No Action)
- Watch (Be Aware)
- Alert (Be Prepared To Take Action)
- Warning (Take Action)

**Probabilistic Forecast**

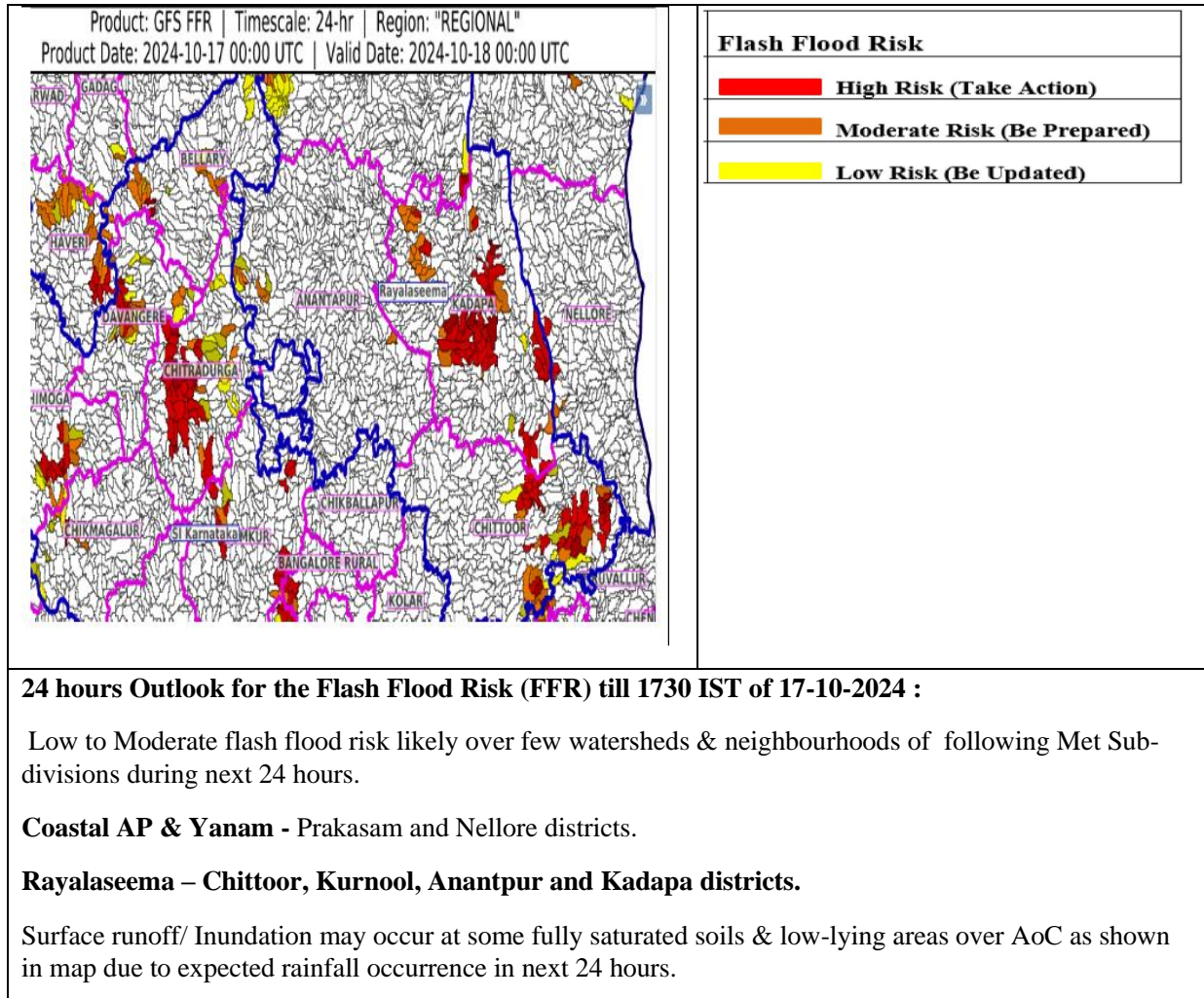
Terms	Probability of Occurrence (%)
Unlikely	< 25
Likely	25 - 50
Very Likely	50 - 75
Most Likely	> 75





- Action may be taken based on **ORANGE AND RED COLOUR** warnings.
- Vulnerable regions likely urban and hilly areas action may be initiated for heavy rainfall warning.
- As the lead period increases forecast accuracy decreases.

## Flash Flood Guidance



### Fishermen Warning Graphics

